

SAC, WFO (47-10713)

1/3/79

Director, FBI (47-56689)

MARY SUE HUBBARD
JANE KEMBER-FUGITIVE
MORRIS BUDLONG-FUGITIVE
ET AL
SITOL

ALL INFORMATION CONTAINED
HEREIN IS UNCLASSIFIED
DATE 4-7-80 BY SP7/ML/UC

Re airtel dated 11/2/78

There is (are) being forwarded to your office

by Hand-carried Two
(method of transmittal) (number or quantity)

40"x60" trial charts prepared by Special Projects
(article(s) or item(s))
Section, Laboratory Division, re captioned matter.

The following action should be taken by your office:

- Check charts against submitted work papers or roughs.
- Advise of exact trial date, soon as known.
- After action completed advise Bureau, attention Special Projects Section, re use and value of charts. Include comments, if any, by court officers.
- Note list of chart titles on attached sheet.
- Note Special Projects Section Comments on attached sheet.

COMMENTS:

Submitted original documents enclosed herewith.

MAILED 13
JAN 4 1979
FBI

Enclosure

REC-80

47-56689-445

EX-114

4 JAN 5 1979

(3) BEG'S W/IF BOON

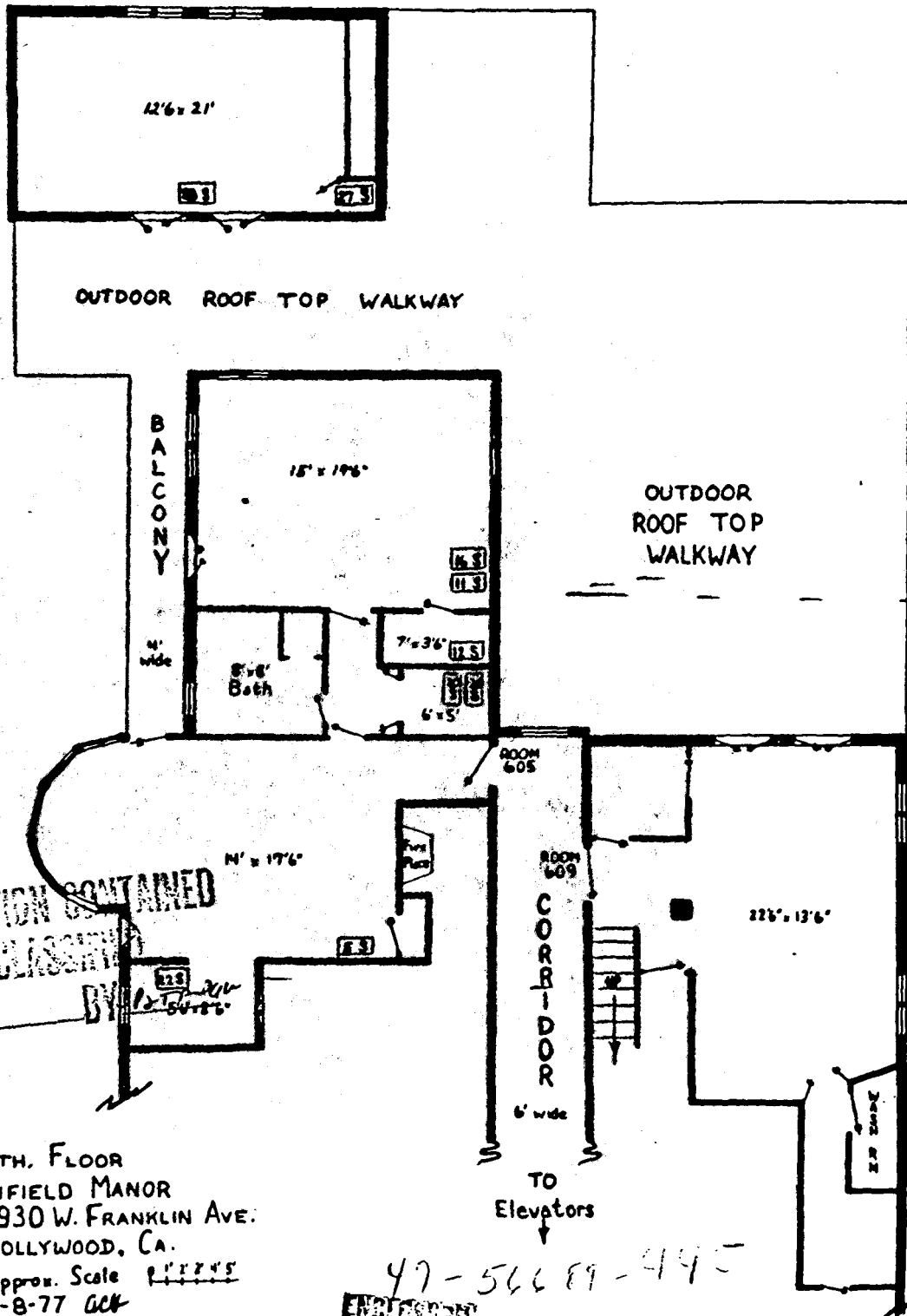
ENCLOSURE

MAIL ROOM

79 JAN 23 1979

FRANKLIN AVE.

TAMARIND AVE.



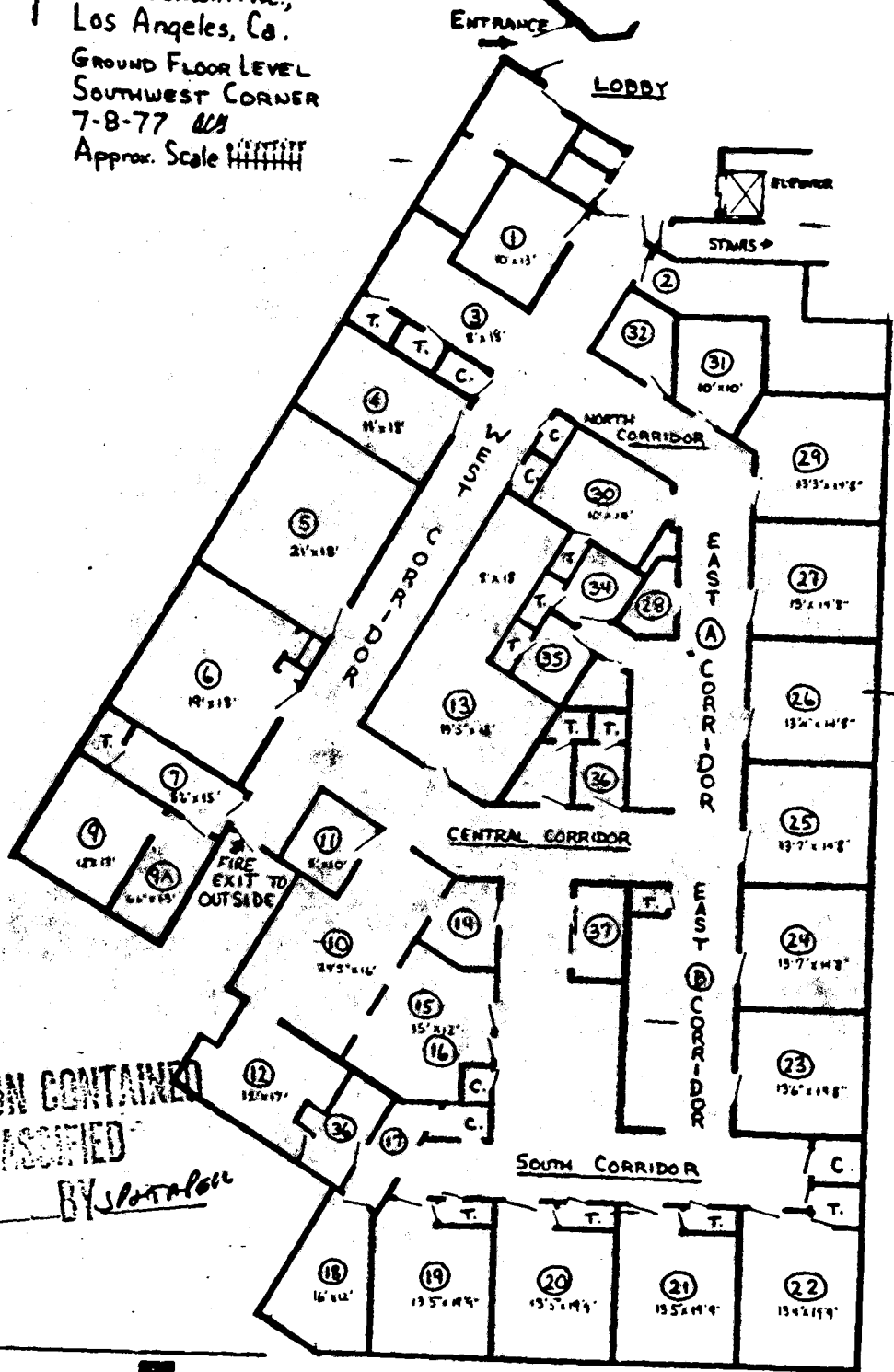
ALL INFORMATION CONTAINED
 HEREIN IS UNCLASSIFIED
 DATE 4-7-83 BY [signature]

6TH. FLOOR
 FIELD MANOR
 5930 W. FRANKLIN AVE.
 HOLLYWOOD, CA.
 Approx. Scale 1" = 10'-0"
 7-8-77 GCH

47-56689-4145
 ENCLOSURE

N
 Former Cedars of Lebanon Hosp.
 4833 Fountain Ave.,
 Los Angeles, Ca.
 GROUND FLOOR LEVEL
 SOUTHWEST CORNER
 7-8-77 *ACB*
 Approx. Scale

CATALINA



ALL INFORMATION CONTAINED
 HEREIN IS UNCLASSIFIED
 DATE 4-7-80 BY *SP/ALP*

FOUNTAIN AVE.

47-56689-445